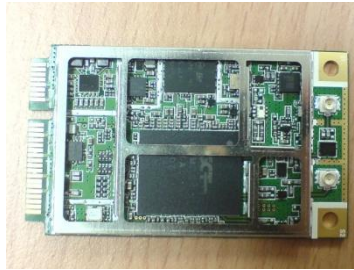


# D15G2 LTE **Band3/7/20** mini PCI Express card module

April 25, 2012

## A Sketch or Drawing with Interfaces Shown



## Key Features

- Compliant with 3GPP LTE FDD Release 8
- Max. Data Rate : 100Mbps downlink, 50Mbps uplink with LTE category 3
- Support Windows/Linux
- Data interface: USB2.0 High Speed
- Software Features

Technology	Feature
LTE	Data
Host Interface	1. USB 2.0 High Speed for Data Service and Diagnosis 2. Windows 2000/XP/Vista/7 & Linux Device Driver and Reference Connection Manager (*)

- Form Factor: mini PCI Express card module

## Specification

### General

- Support LTE Category 3
- USIM interface
- USB 2.0 Interface

### Transmitter / Receiver

- B3:1.4/3/5/10/15/20 MHz
- B7:5/10/15/20 MHz
- B20:5/10/15/20 MHz
- 2x2 MIMO

### Support Bands

- LTE FDD bands
- Band 3 : UL 1710~1785MHz; DL 1805~1880MHz
- Band 7 : UL 2500~2570MHz; DL 2620~2690MHz
- Band20: UL 832~862MHz; DL 791~821MHz

### Power Class

- Class3 (23dBm  $\pm$  2.7 dB)

### Mechanical

- Antenna: External Antenna (MIMO)
- Dimensions: 30mm x 50.95mm x 5mm
- Weight: approximately 12g

## Standard approval

- 3GPP Conformance Test
- RoHS
- Certifications by customer request.

### Environmental

- Operating Temperature: -10 ~ +55°C
- Storage Temperature: -20°C ~ +70°C

## Accessories

Note:

(\*): Third party SW